

아래의 사진은 실제 가속도 센서의 크기와 같습니다(BA24CM, SAF11, SAF51A, STAF223은 제외).

## 전하 출력형 가속도 센서

P.13~14

**S04SG2**  
0.35pC/g



**S2SG**  
1.6pC/g



**S3SC**  
3pC/g



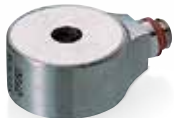
**S2SCB2**  
2pC/g



**BW21SG2**  
18.4pC/g



**S41SCB2**  
36.7pC/g



**S31SC**  
30pC/g



**P51C**  
50pC/g



**S42SC**  
350pC/g



**P51SCH2**  
50pC/g



## 앰프 내장형 가속도 센서

P.15

**SAR11SCG**  
10mV/g



**SA51SC**  
50mV/g  
**SA12SC**  
100mV/g



**SA11C**  
10mV/g



**SA11SC**  
10mV/g



**BA24CM**  
15,000mV/g



**SAR12SCLM**  
100mV/g



## 설비 감시용 가속도 센서

P.16

**SAF11**  
10mV/g



**SAF51A**  
50mV/g



**PAF51SU**  
50mV/g



**SAF12C**  
100mV/g



**STAF223**  
200mV/g



## 3축 가속도 센서

P.17~18

**S04ZSG**  
0.4pC/g



**S2ZSCG**  
1.6pC/g



**S6ZSCBH**  
6pC/g



**SA11ZSCA**  
10mV/g

**SA12ZSCA**  
100mV/g

**3511A2·3512A2**  
TEDS



**SA11ZSC-TI**  
10mV/g

**SA12ZSC-TI**  
100mV/g

**3511A1·3512A1**  
TEDS



추천품

■ 앰프 내장형 가속도 센서

Model Name	Weight (gm)	Sensitivity (mV/g)	Resonant Frequency (kHz)	Frequency Response (Hz±3dB)	Measurement Range (g)	Shock Limit (g)	Connector	Temperature Range (°C)	Page
<b>소형</b>									
SAR11SCG	0.6	10	50	1~13,000	500	3,000	CZ694(3-56)	-50~+120	15
SA11C	1.9	10	45	1.5~16,000	220	1,000	C29-103R(M3)	-30~+110	15
SA11SC	2.9	10	45	1.5~16,000	220	1,000	C29-103R(M3)	-30~+110	20
<b>일반 용도</b>									
PA11C	14.5	10	52	3~20,000	220	3,000	Miniature(10-32)	-20~+110	20
SA51SC	10	50	40	5~10,000	44	4,900	Miniature(10-32)	-50~+110	15
PA51C	19	50	35	3~12,000	45	3,000	Miniature(10-32)	-20~+110	20
SA12SC	10	100	40	5~10,000	22	4,900	Miniature(10-32)	-50~+110	15
<b>고감도용</b>									
SA13SC	260	1,000	7	0.4~2,000	2	50	Miniature(10-32)	-20~+110	20
SA53SCM	430	5,000	4	0.4~1,000	0.5	100	Miniature(10-32)	-20~+80	20
BA24CM	170	15,000	1.5	0.3~500	0.2	100	Miniature(10-32)	-10~+60	15
<b>극저온용</b>									
SAR12SCLM	71	100	17	5~5,000	20	1,000	Miniature(10-32)	-196~+80	15

■ 설비 감시용 가속도 센서(방수 절연형)

Model Name	Weight (gm)	Sensitivity	Resonant Frequency (kHz)	Frequency Response (Hz±3dB)	Measurement Range (g)	Shock Limit (g)	Connector	Temperature Range (°C)	Page
<b>앰프 내장형</b>									
SAF11	53	10mV/g	45	5~10,000	360	1,000	Cable 0.5m Free	-20~+120	16
SAF51A	48	50mV/g	24	3~10,000	45	1,000	Cable 5m Free	-20~+120	16
PAF51C	49	50mV/g	35	3~10,000	70	1,000	TNC	-20~+120	20
PAF51SU	78	50mV/g	52	5~7,000	70	1,000	Cable 5m Free	-20~+110	16
SAF12C	55	100mV/g	22	3~6,000	35	500	TNC	-20~+120	16
STAF223	70	200mV/g	20	0.1~10,000	11	500	Cable 10m Free	-20~+120	16
<b>전하 출력형</b>									
PF51C	53	50pC/g	29	fc~8,000	500	1,000	TNC	-30~+150	20
SF51SU	80	50pC/g	28	fc~5,000	500	1,000	Cable 5m Free	-20~+150	20
SF42M	170	350pC/g	14	fc~5,000	60	120	Cable 2m BNC	-20~+80	20

■ 3축 가속도 센서

Model Name	Weight (gm)	Sensitivity	Resonant Frequency (kHz)	Frequency Response (Hz±3dB)	Measurement Range (g)	Shock Limit (g)	Connector	Temperature Range (°C)	Page
<b>전하 출력형</b>									
S04ZSG	1.2	0.4pC/g	≥60	fc~20,000	2,500	5,000	Cable 0.3m CZ320×3	-50~+160	17
SW04ZSG	1.3	0.4pC/g	≥60	fc~20,000	2,500	5,000	Cable 2m Miniature(10-32)×3	-50~+160	20
S2ZSCG	5.2	1.6pC/g	≥35	fc~15,000	1,000	10,000	C29-103R(M3)×3	-20~+160	17
S6ZSCBH	60	6pC/g	≥20	fc~8,000	500	500	Miniature(10-32)×3	-30~+250	17
<b>앰프 내장형</b>									
SA11ZSCA	4.4	10mV/g	≥55	(Z)0.5~20,000	500	3,000	CZ664	-50~+120	18
SA12ZSCA	4.4	100mV/g	≥55	(Z)0.5~18,000	45	3,000	CZ664	-50~+110	18
3511A2	4.4	10mV/g	≥55	(Z)0.5~20,000	500	3,000	CZ710	-50~+120	18
3512A2	4.4	100mV/g	≥55	(Z)0.5~18,000	45	3,000	CZ710	-50~+110	18
SA11ZSC-TI	11.1	10mV/g	≥35	1~8,000	400	3,000	DR-4S-4	-50~+110	18
SA12ZSC-TI	11.1	100mV/g	≥35	1~8,000	40	3,000	DR-4S-4	-50~+110	18
BA24ZCFM	1,500	15,000mV/g	≥1	0.4~300	0.25	100	R04-R5F	-20~+60	20

# 설비 감시용 가속도 센서(방수 절연형)

【ACCELEROMETERS】

Industrial accelerometers for machine monitoring (Waterproof and insulated)

Model Name	SAF11	SAF51A	PAF51SU	SAF12C	STAF223	
Features	일반 용도 · 저가격	일반 용도 · 저가격	Low profile	고감도	고감도	
Size	<p>Unit : mm</p>					
Voltage Sensitivity(mV/g)	10	50	50	100	200	
Resonant Frequency(kHz)	45	24	52	22	20	
Frequency Response	Hz±1dB	10~5,000	-	10~3,000	6~3,000	-
	Hz±3dB	5~10,000	3~10,000	5~7,000	3~6,000	0.1~10,000
Measurement range(±g)	360	45	70	35	11	
Shock Limit(±g)	1,000	1,000	1,000	500	500	
Temperature Range(°C)	-20~+120(~2mA) -20~+110(~5mA)	-20~+120(~2mA) -20~+110(~5mA)	-20~+110	-20~+120(~2mA) -20~+110(~5mA)	-20~+120(~2mA) -20~+110(~5mA)	
Insulation Resistance(MΩ)	≥ 10,000	≥ 10,000	≥ 10,000	≥ 10,000	≥ 10,000	
Transverse Sensitivity(%)	≤ 5	≤ 5	≤ 5	≤ 5	≤ 10	
Output Impedance(Ω)	≤ 100	≤ 100	≤ 100	≤ 100	≤ 100	
Thermal Transient Sensitivity(g/°C)	0.017	0.0009	0.027	-	-	
Base Strain Sensitivity(g/μ)	0.006	0.0014	0.001	-	-	
Grounding	2중 Case 절연	2중 Case 절연	2중 Case 절연	2중 Case 절연	2중 Case 절연	
Sensing Geometry	Shear	Shear	Compression	Shear	Shear	
보호등급 JIS(C0920)	IPX2	IPX7	IPX7	IPX2(전용케이블 사용시)	IPX7	
Weight(gm)	53	48	78	55	70	
Case Material	Stainless steel	Stainless steel	Stainless steel	Stainless steel	Stainless steel	
Connector(P.24)	DX2-040(0.5m) Free	DX2-040(5m) Free	DX2-040(5m) Free	TNC	DX2-040(10m) Free	
Mounting Thread	Female(M6 • D=5)	Female(M6 • D=5)	커플링 너트(M20)	Female(M6 • D=5)	Female(M6 • D=5)	
Accessories Included	Mtg stud(M6×1×10)	Mtg stud(M6×1×10)	전용 stud 별매	Mtg stud(M6×1×10)	Mtg stud(M6×1×10)	
Power Requirement	15~25VDC, 0.5~5mA	12~25VDC, 0.5~5mA	15~25VDC, 0.5~5mA	15~25VDC, 0.5~5mA	15~25VDC, 0.5~5mA	
Optional Cable(P.22~24)	-	-	-	12 13 14	-	
Mounting Adapter(P.25~26)	3 14 17 18 19	3 14 17 18 19	위 그림 참조	3 14 17 18 19	3 14 17 18 19	

■ 앰프 내장형 가속도 센서

SA11SC	PA11C	PA51C	SA13SC	SA53SCM
<p>Mounting thread Female(M3*P0.5*D2)</p>	<p>Mounting thread Female(M6*P1*D5)</p>	<p>Mounting thread Female(M6*P1*D5)</p>	<p>Mounting thread Female(M6*P1*D5)</p>	<p>Mounting thread Female(M8*P1.25*D8)</p>

■ 설비 감시용 가속도 센서(방수 절연형)

PAF51C	PF51C	SF51SU	SF42M
<p>앰프 내장형</p> <p>Mounting thread Female(M6*P1*D5)</p>	<p>전하 출력형</p> <p>Mounting thread Female(M6*P1*D5)</p>	<p>● 전용 Stud</p>	<p>Mounting thread Female(M6*P1*D5)</p>

■ 3축 가속도 센서

SW04ZSG	BA24ZCFM
	<p>앰프 내장형</p>